

DryLINK Asset Manager



**REVOLUTIONIZE YOUR
ASSET MANAGEMENT
WITH DRYLINK.**

HOW IT WORKS...

Asset Manager Overview

With our cutting-edge asset manager system, you can easily keep track of your equipment. This system requires no human interaction and is highly efficient. It can be used for a variety of purposes, such as tracking vehicles, warehouse inventory, jobsite equipment, and even temporary locations during events. Check out the list of products below to get started with our revolutionary asset tracking technology.



DryTAG

Tag All Equipment with DryTAG or DryTAG RH Bluetooth Beacons. These Beacons send out information every 10 seconds when running and every minute when not running. Scan the QR code to learn more.



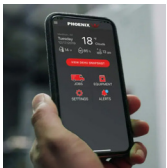
DryTAG RH

Use DryTAG RH when doing asset tracking and automatically gathering psychrometric readings from non-smart dehumidifiers in DryLINK. Scan the QR code to learn more.



DryLINK Mobile Gateway

All vehicles and warehouses must have gateways installed to read DryTAGS. Scan the QR code to learn more.



DryLINK

Asset Manager uses DryLINK job names and addresses for accurate locations. DryLINK can also be used for jobsite data collection and remote monitoring. Scan the QR code to learn more.



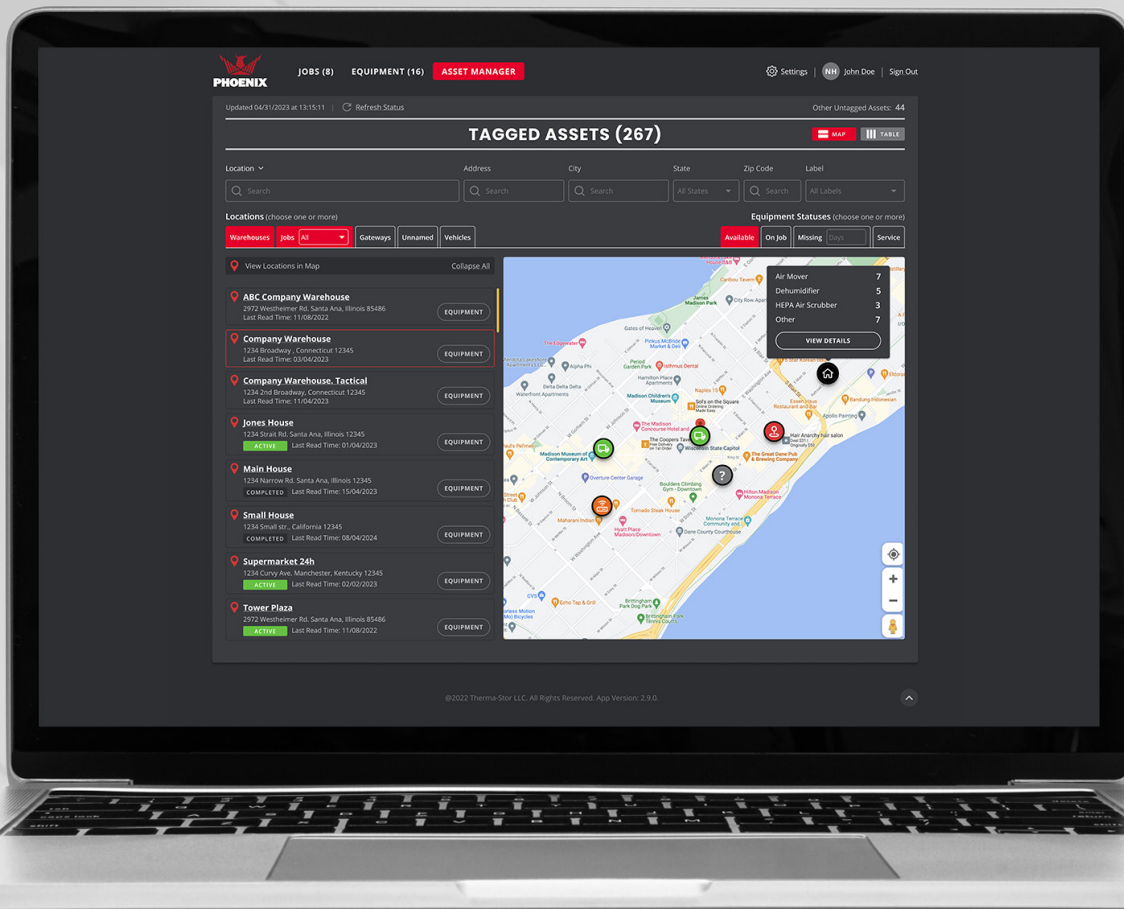
DryPHONE

Optionally use DryPHONE for updates every 15 minutes from the jobsite including run time of equipment. Scan the QR code to learn more.



VIEWS

Tagged Assets: Map View

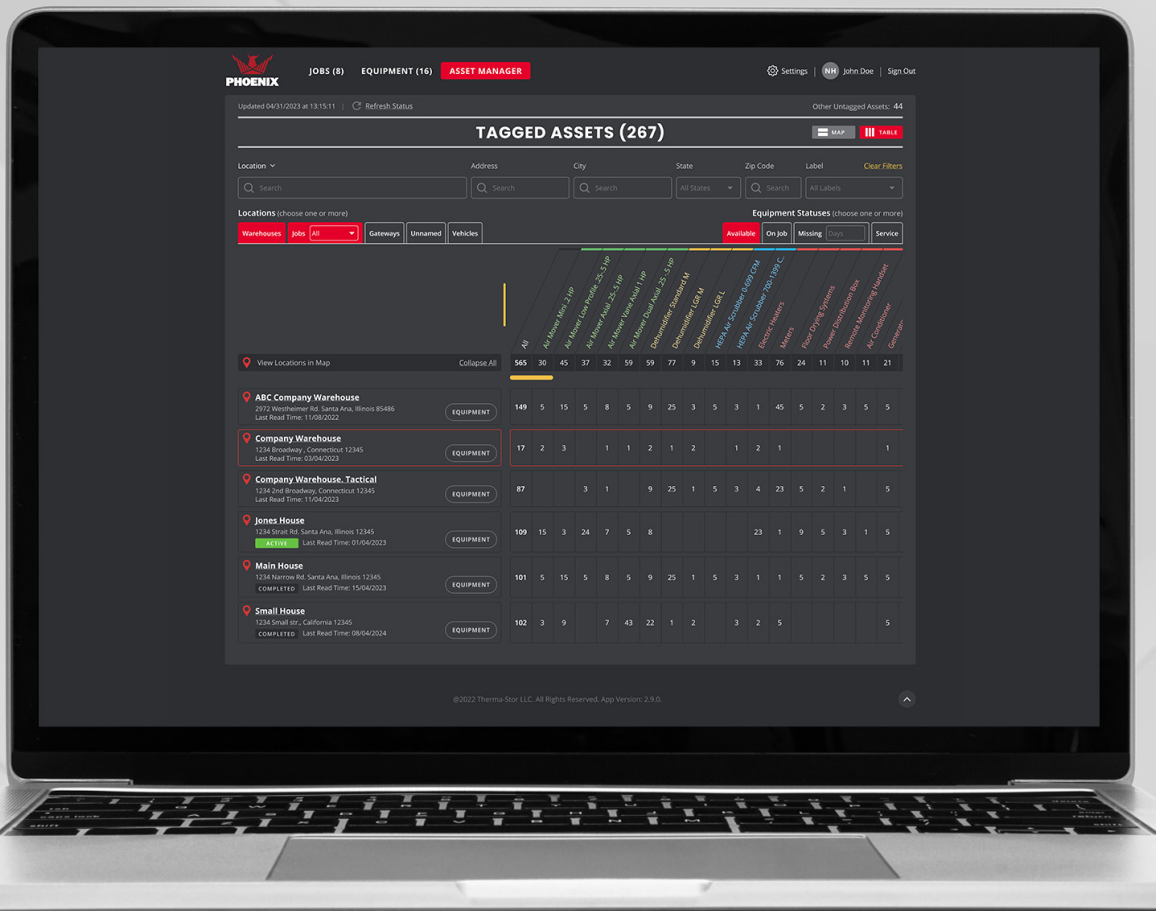


FEATURES

- ▶ At a glance view of vehicles, warehouses, jobs, and their associated equipment
- ▶ Vehicle locations updated every five minutes
- ▶ Quickly toggle from location to location by clicking on the cards
- ▶ Filter on locations and equipment statuses

VIEWS

Tagged Assets: Table View



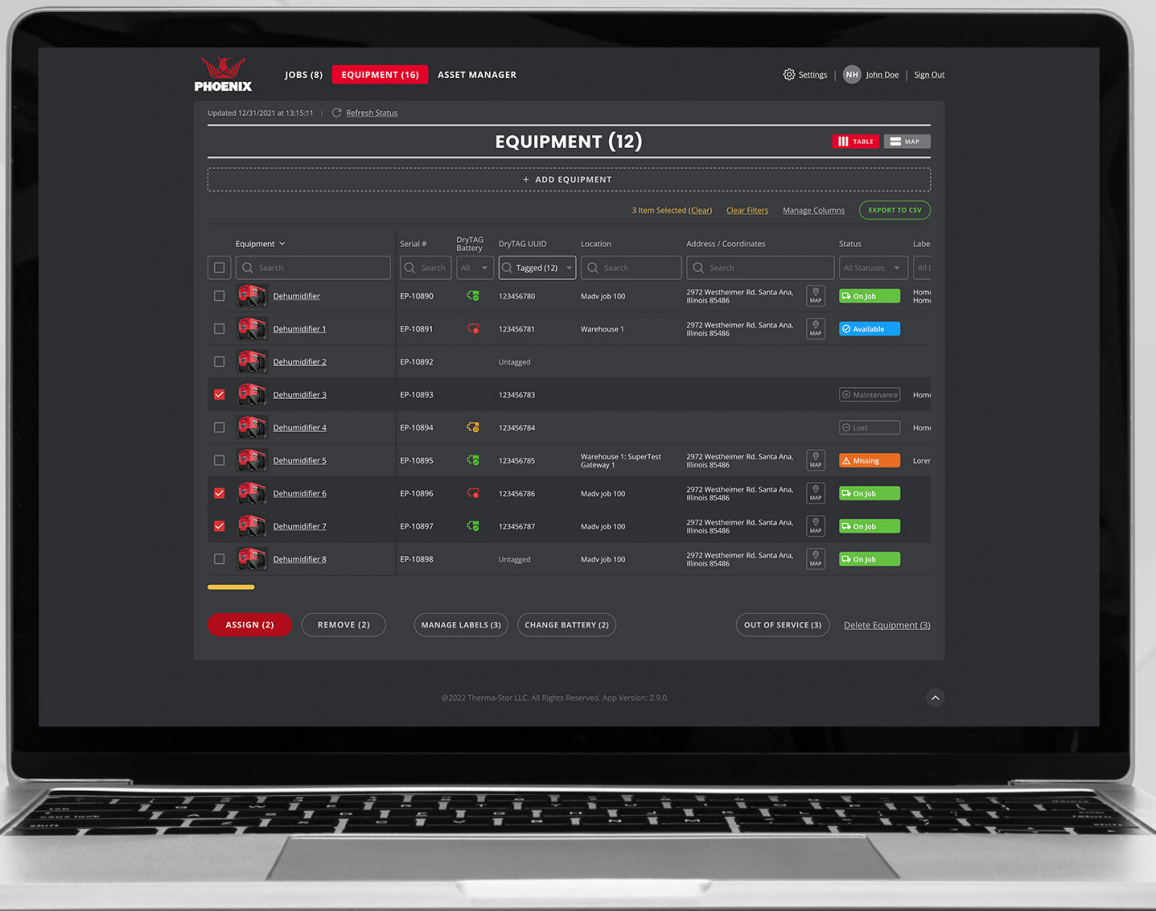
FEATURES

- ▶ Equipment summarized by location and Xactimate category
- ▶ Add custom columns
- ▶ Manage your individual column view
- ▶ Export to CSV
- ▶ Easily toggle to Map or Table View
- ▶ Filter on locations and equipment statuses



VIEWS

Advanced Equipment View



FEATURES

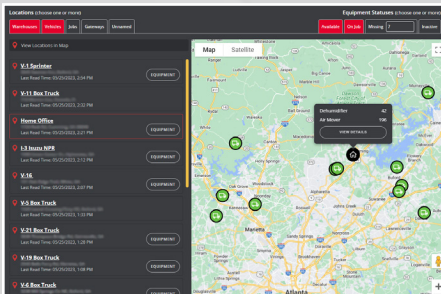
- ▶ Last read time & last user
- ▶ New battery reset
- ▶ Move to maintenance
- ▶ Search By – Equipment name, serial number, location, address/coordinates, last job name, model, type, size, manufacturer
- ▶ Selectable Filters – General Type: air mover, dehumidifier, air scrubber and other
- ▶ DryTAG UUID – Filter by untagged and tagged equipment, our statuses include available, inactive, on job and missing



BENEFITS

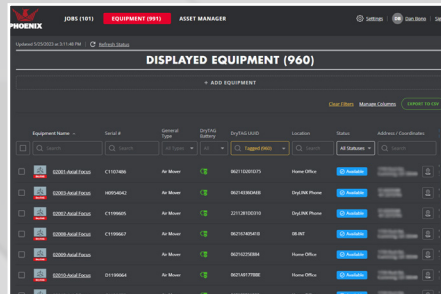
Asset Manager Benefits

By using our asset tracking system, you can reduce lost equipment and rental costs, eliminate the need for inventory management, accurately claim business losses in the event of theft, and greatly reduce unpaid site visits due to forgotten equipment. Plus, you can track the locations of your vehicles and deploy assets effectively during an event. To discover all the advantages of using the asset manager, continue reading below.



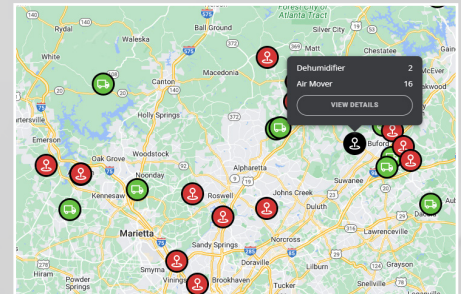
REDUCE LOST EQUIPMENT AND RENTAL COSTS

Equipment is tracked in your warehouses, on your vehicles, and on your jobs with no human interaction. Know what is available and where it is located at all times.



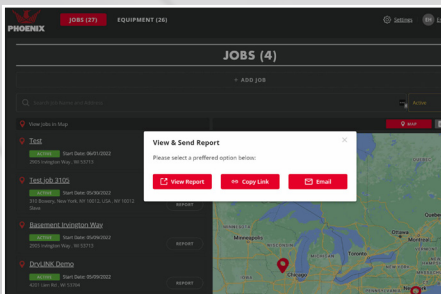
EFFICIENTLY MANAGE INVENTORY

No need to take inventory or cycle counts of warehouses, trucks, or trailers. Replace Bin Systems and no need to check trailers or vehicles to see if they are stocked properly.



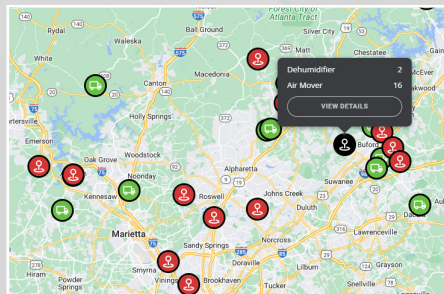
MAJOR VEHICLE OR TRAILER THEFT

Accurately and immediately know what exact equipment was involved in order to start the insurance claim and accurately claim a business loss.



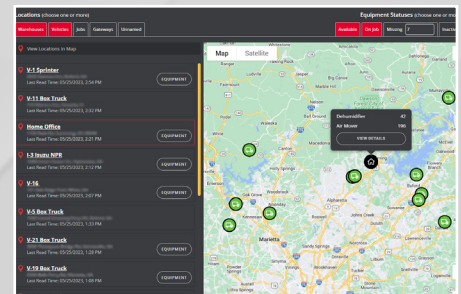
REDUCE UNPAID SITE VISITS DUE TO EQUIPMENT LEFT BEHIND

Eliminate the feeling of thinking you forgot something; instead, receive a notification that you did forget something.



VEHICLE LOCATIONS

Know at 5-minute intervals where your gateway enabled vehicles are located.



BY PROXIMITY, DEPLOY ASSETS EFFECTIVELY, RESPOND QUICKLY DURING AN EVENT

See vehicles on a map with a quick view of available equipment. Use table view to see total assets grouped by Xactimate categories.



BENEFITS

Asset Manager Benefits



RECEIVE JOBSITE STATUS UPDATES

Keep track of run-time and location. If you use a DryPHONE, which is optional, you can receive notifications every 15 minutes if equipment is turned off or is no longer reporting in.



SEE WHERE LABELED ASSETS ARE LOCATED

Assign assets to a branch location, a vehicle, or an employee or any label, and then filter by assignment. (i.e. show me all equipment which belongs in Truck 1).



CONTINUAL MONITORING FOR LOST EQUIPMENT

If equipment is lost or stolen, we will continually monitor all DryLINK assets to see if any lost equipment sends updated GPS coordinates from any DryLINK app and alert you if found.



UNNAMED ICON

Can display a list of equipment left behind, missing or not added to the job by job name or address.



REDUCE ASSET OVERBUY DUE TO BETTER ASSET UTILIZATION

Don't buy more than you need during an event just because you do not know where your equipment is located.

DryLINK Asset Manager is a game changer; with its unique accelerometer, DryTAG provides real-time runtime information, making it stand out from other asset tracking systems. With the convenience of Bluetooth technology, versatile DryTAG's can be used in both DryLINK for jobs and DryLINK Asset Manager. What's even more exciting is that Phoenix is developing a future where Asset Tracking is built right into their equipment and DryTAGs will no longer be needed.

Scan the QR Code to the right to schedule a demo, watch instructional videos and learn more about our revolutionary DryLINK Asset Manager.





USEPHOENIX.COM | 800-533-7533